

Newsletter July 2012

DENNIS & HEATHER DALLA, BOX 178, WAROOKA SA 5577



Ph 08 88545 250, fax 08 8854 5306,

Email: orrie_cowie@bigpond.com

EXCITING NEWS!!!
Orrie Cowie ram sale 8th August
DON'T MISS IT!

Jolson 100053 and OC Exceller 042539 (having a chat)



WATCH OUT FOR THOSE POLLS
they're taking over and
starting the sale

And Mr TA Murdoch purchased Orrie
Cowie in Nov 1922—nearly 90 years

*They look good though
what else to expect after 45 YEARS
OF BREEDING THEM*

*What's more sheep have been running on
Orrie Cowie since 1842—170 years!*

This year with good stubbles and an early break has given the rams an opportunity to **develop their genetic potential** for growth and fleshing. Development of these traits is important at Orrie Cowie as it gives us the chance to cull out the poor doers and the genetically small sheep. We will have carcase measurements on our top 32 young short wool merino and poll merino rams for the first time for some years. We hope you take the time to evaluate this data in relation to bodyweight and fat cover depth.

BE PREPARED: latest research has shown many sheep are susceptible to pulpy kidney at as little as 3 months after their booster. Coming through a wet winter with excellent clover germination and mostly good feed growth, please don't get caught on your young sheep and rams just for the sake of another jab prior to early spring.

Important Dates:

- ASWS, BENDIGO
20TH-22ND JULY
- **ON-PROPERTY**
- PRE-SALE INSPECTION
7TH AUGUST 2012
- STARTS 11.00AM
- PRE-SALE PARTY
7TH AUGUST 2012
- FROM 6.00PM
- **ANNUAL RAM SALE
8th AUGUST 2012**
- INSPECTION FROM 9.00AM
- **AUCTION STARTS 1.00PM**
- **DON'T MISS IT!**
- ORRIE COWIE WEBSITE



RIGHT CHOICE - The RIGHT WOOL from the RIGHT GENETICS on the RIGHT BODIES

DENNIS & HEATHER DALLA, BOX 178, WAROOKA SA 5577

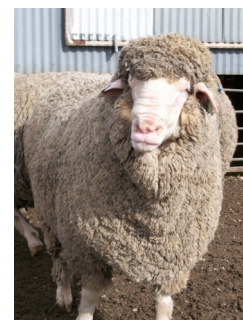
2548 Corny Point Road
PO Box 178
WAROOKA SA 5577
Phone: 08 8854 5250
Fax: 08 8854 5306
E-mail:
orrie_cowie@bigpond.com

Not to be missed - 8th August @ Orrie Cowie



LOT 1: Exceller 100005

Great structure, gutsy quality 58/60's wool



LOT 3: Nepowie 102520

Built like a Mack truck, weighing 147kg



LOT 2 Rambo 102598 Dual purpose



LOT 9: Prince 102792

1/2 brother to \$12,000 ram last year, Younger

WHERE
QUALITY IS
JUST THE
BEGINNING

.....

Visit our new website: www.orriecowie.com.au

BETTER RAMS BREED BETTER LAMBS -

EWES MANAGEMENT HELPS

As I travel around I hear and see significant problems with both poor lambing %'s and ewe deaths at or near lambing. Most of this can be avoided, however excuse me for only offering a few pointers towards improvement on a large and complex set of problems. Firstly a dose of high potency vitamins both approaching joining and pre-lambing can help but it would be worth discussing with me what maybe best to use.

A rising plane of nutrition, coming off score 3 at joining is essential for the full 5-6 weeks and then careful maintenance of this body score for 2-3 weeks. For the next month just letting the ewes tick along without lots of supplementary feeding is good. At 6 weeks after joining, scanning for singles/twins and drys will give you 3 mobs each with a very different feed requirements. A twin bearing ewe has about 2.5x the feed requirements of a ewe bearing a single.



2011 drop WS rams

This year our White Suffolk and Poll Dorset rams are bigger than ever, meaning their growth rates are superior to previous years.

We are extremely pleased with them. Current carcase measurements will be available on the day on their pen cards.